

Vint-tro®

Brand Guidelines

your emotion is our passion

Colour Library

Orange

Hex #f58426

RAL 2003

	245	132	38
---	-----	-----	----

The hexadecimal colour code #f58426 is a shade of orange. In the RGB colour model #f58426 is comprised of 96.08% red, 51.76% green and 14.9% blue. In the HSL colour space #f58426 has a hue of 27° (degrees), 91% saturation and 55% lightness. This colour has an approximate wavelength of 589.73 nm.

Dark Grey

Hex #222222

RAL 9017

	34	34	34
---	----	----	----

The hexadecimal colour code #222222 / #222 is a very dark shade of grey. In the RGB colour model #222222 is comprised of 13.33% red, 13.33% green and 13.33% blue. In the HSL colour space #222222 has a hue of 0° (degrees), 0% saturation and 13% lightness. This colour has an approximate wavelength of 0 nm.

Grey

Hex #999999

RAL 7004

	153	153	153
---	-----	-----	-----

The hexadecimal colour code #999999 / #999 is a medium light shade of grey. In the RGB colour model #999999 is comprised of 60% red, 60% green and 60% blue. In the HSL colour space #999999 has a hue of 0° (degrees), 0% saturation and 60% lightness. This colour has an approximate wavelength of 0 nm

Fonts & Sizes

All Fonts

Montserrat

Heading Size

14

Orange

Hex #f58426

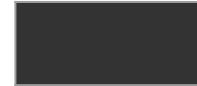


Sub Headings

12

Black

Hex #222222



Normal Text

10

Grey

Hex #999999



Footer Text (Legal Notices)

8

Grey

Hex #999999

Vint-tro.[®]

Vint-tro.[®]
COVER



Our Icon logo below is vertically opposed, where again must never be stretched and presented in a consistent size on all formats. This logo must be positioned facing forward on our clothing range.

For coats, hoodies and general clothing, this logo must be placed on the left breast, hats positioned central.



Our Tagline

Our tagline is designed in lowercase and, must never be stretched and presented in a consistent size on all formats.

your emotion is our passion

Our tagline is always positioned in the bottom right hand corner on every document, every promotional banner and website.

Colour Orange

#f58426



Text Size

6

Font

Montserrat

your emotion is our passion

Insurance Tagline

Our Insurance tagline is designed with capital letters at the beginning of each word and is always positioned dead central under the Vint-tro Cover Logo



Insurance Designed By Enthusiasts For The Enthusiast

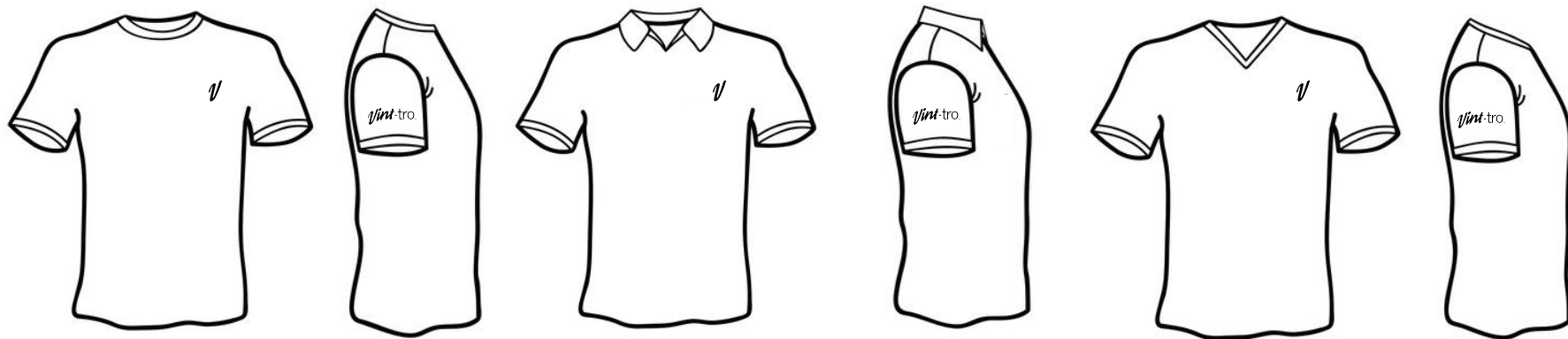
Colour Grey Hex #999999

Text Size 10

Font Montserrat



your emotion is our passion



Our **logo** above is horizontal, must never be stretched and presented in a consistent size on all formats. The logo can be either **printed or embroidered using a satin stitch**

For clothing T-Shirts and Polo Tops, the main **vint-tro** logo must be always positioned on the right arm and the **V** logo to be positioned on the left breast.



Top Colour	Logo colour	Top Colour	Logo colour	Top Colour	Logo colour
White	Orange	Black	Orange	Dark Grey	Orange
White	Black	Black	White	Dark Grey	White

Silhouettes



Our **logo** above is horizontal, must never be stretched and presented in a consistent size on all formats. The logo can be either **printed or embroidered using a satin stitch**

For clothing T-Shirts and Polo Tops, the main **vint-tro** logo must be always positioned on the right arm.

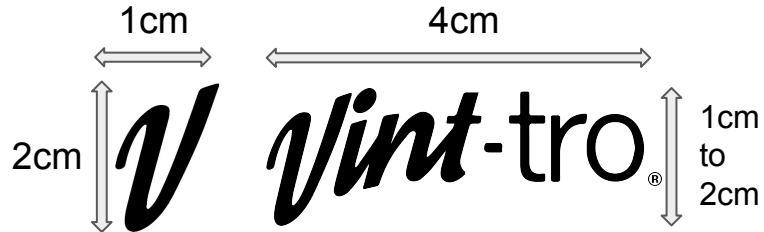


Top Colour	Logo colour	Top Colour	Logo colour	Top Colour	Logo colour
White	Orange	Black	Orange	Dark Grey	Orange
White	Black	Black	White	Dark Grey	White



Our **logo** above is horizontal, must never be stretched and presented in a consistent size on all formats. The logo can be either **printed or embroidered using a satin stitch**

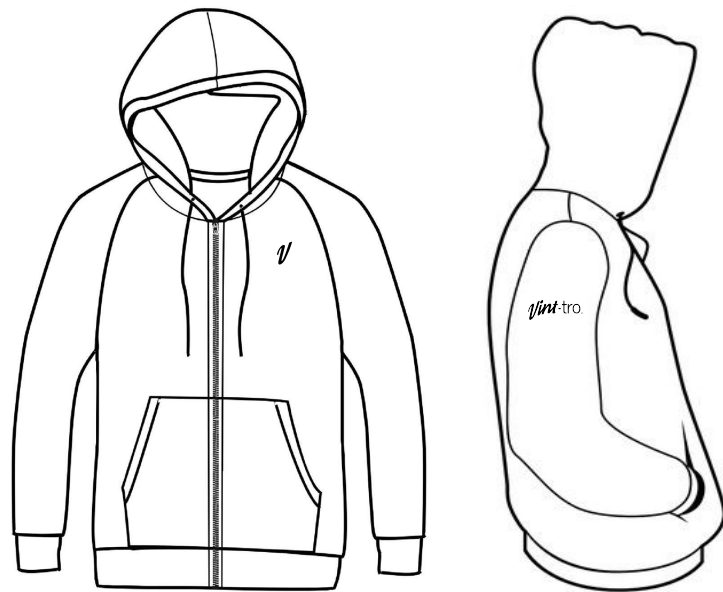
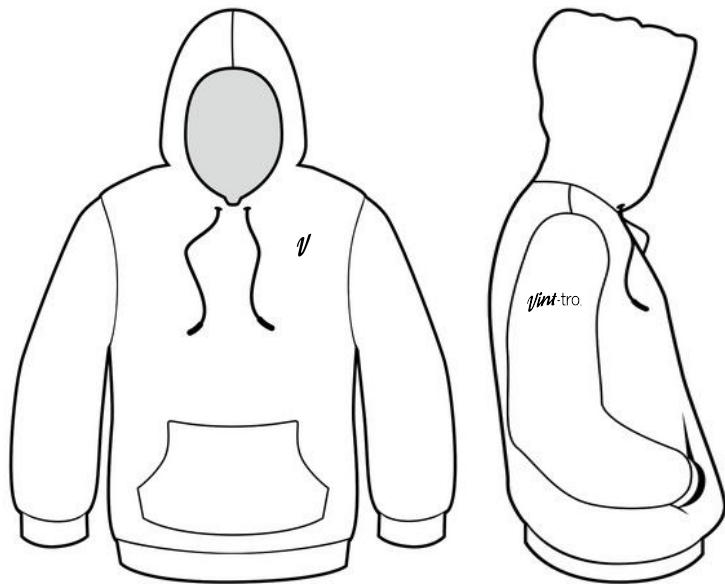
For clothing Shirts and Polo Tops, the main **Vint-tro** logo must be always positioned on the right arm and the **V** logo to be positioned on the left breast.



Top Colour	Logo colour
White	Orange
White	Black
White	White

Top Colour	Logo colour
Black	Orange
Black	White
Black	Black

Top Colour	Logo colour
Dark Grey	Orange
Dark Grey	White
Dark Grey	Dark Grey



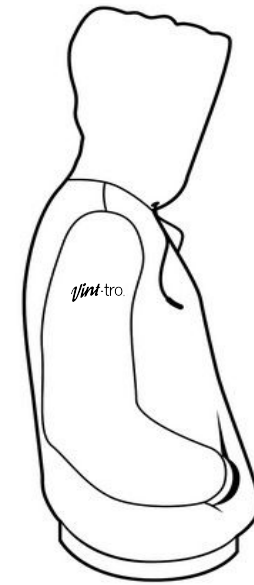
Our **logo** above is horizontal, must never be stretched and presented in a consistent size on all formats. The logo can be either **printed or embroidered using a satin stitch**

For hoodies and zoodies, the main **Vint-tro.** logo must be always positioned on the right arm and the **V** logo to be positioned on the left breast.



Top Colour	Logo colour	Top Colour	Logo colour
Black	Orange	Dove Grey	Orange
Black	White	Dove Grey	Dark Grey

Silhouettes



Our **logo** above is horizontal, must never be stretched and presented in a consistent size on all formats. The logo can be either **printed or embroidered using a satin stitch**

For hoodies and zoodies, the main **vint-tro** logo must be always positioned on the right arm.



Top Colour	Logo colour	Top Colour	Logo colour
Black	Orange	Dove Grey	Orange
Black	White	Dove Grey	Dark Grey

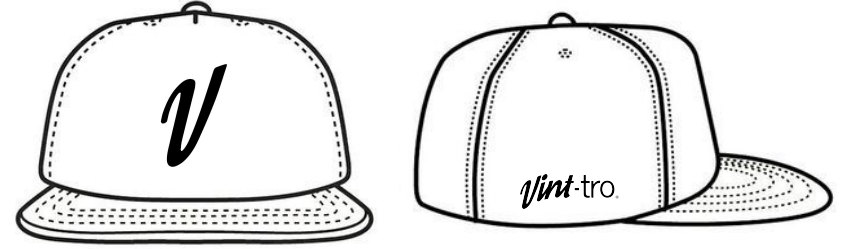
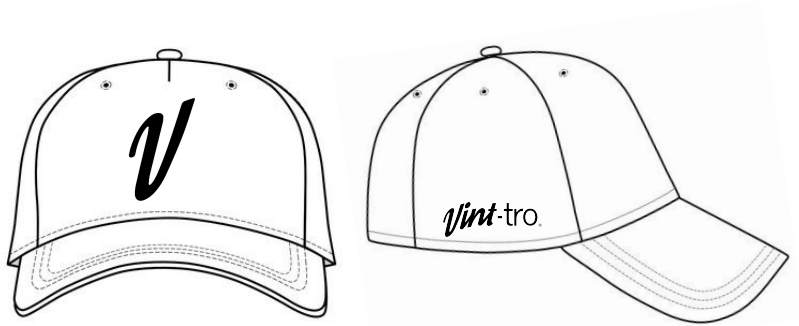


Our logo above is horizontal, must never be stretched and presented in a consistent size on all formats. The logo will be embroidered using a satin stitch.

For Jackets , the main *vint-tro*. logo must be always positioned on the right arm and the *V* logo to be positioned on the left breast. For body warmers the main *vint-tro*. logo must be always positioned on the right shoulder and the *V* logo to be positioned on the left breast.

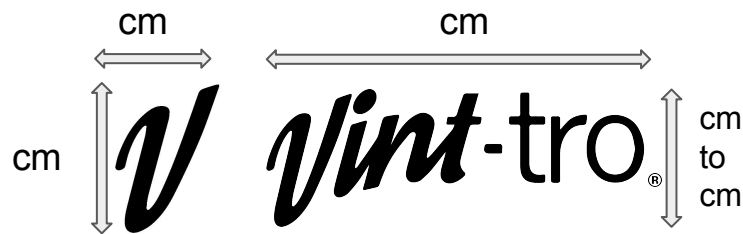


Top Colour	Logo colour
Black	Orange
Black	White

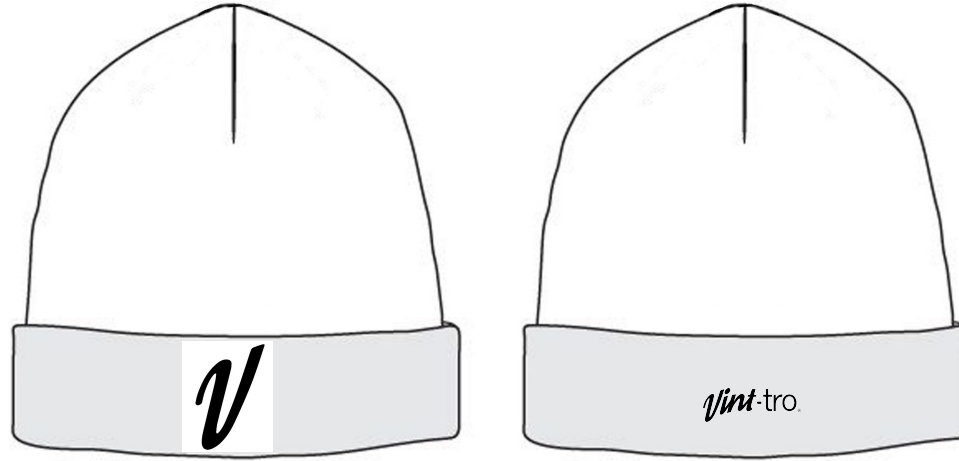


Our Icon **logo** below is vertically opposed, where again must never be stretched and presented in a consistent size on all formats. This logo must be positioned facing forward on our clothing range.

Both bent peak and snapback hats, are to have five panels and to be structured, The **V** logo is to be **satint** **stitched 3D puff** on the front and central and our **Vint-tro.** logo to be on the right side as shown above and satin stitched.



Hat Colour	Logo Colour
Black	Orange
Black	White



Our Icon logo below is vertically opposed, where again must never be stretched and presented in a consistent size on all formats. This logo must be positioned facing forward on our clothing range.

The *V* logo is to be satin stitched 3D puff on the front and central and our *vint-tro.* logo to be on the right side as shown above and satin stitched.



Hat Colour	Logo Colour
Black	Orange
Black	White

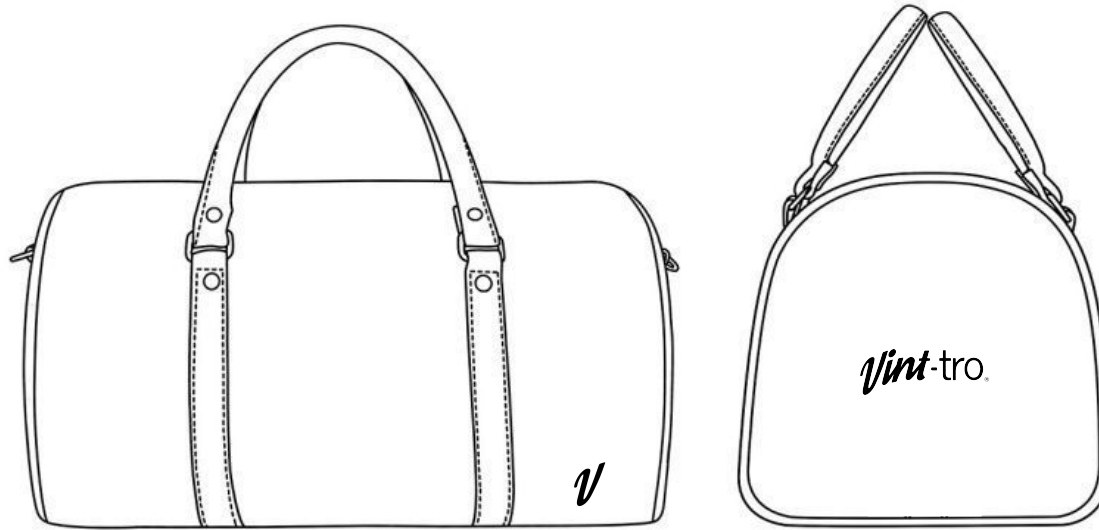


Our Icon **logo** below is vertically opposed, where again must never be stretched and presented in a consistent size on all formats. This logo must be positioned facing forward on our clothing range.

Our **V** logo to be on the left **Vint-tro** to be on the right as your wear it and to be printed.

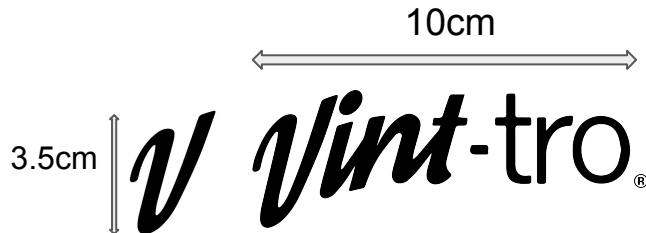


Mask Colour	Logo colour
Black	Orange



Our logo above is horizontal, must never be stretched and presented in a consistent size on all formats. The logo will be embroidered using a satin stitch.

For Jackets , the main *Vint-tro.* logo must be always positioned on the right arm and the *V* logo to be positioned on the left breast. For body warmers the main *Vint-tro.* logo must be always positioned on the right shoulder and the *V* logo to be positioned on the left breast.



Bag Colour	Logo colour
Black	Orange
Black	White

Bag Colour	Logo colour
Tan	Black

Signature Guidelines

Format to be used on all documents, letters and emails

First & Last Name

Job Title

Contact Numbers: +44 (0)776 265 958

Email: xxxxxx.xxxxxx@vint-tro.com

Web: www.vint-tro.com



Instagram

Filter

Clarendon